



Partner with ADM for: Your Responsible Sourcing & Environmental Impact Goals

As the world becomes increasingly concerned with climate change, sustainability has become a corporate imperative. ADM is uniquely positioned to help you address your climate goals—through our Regeneratively Sourced Flour, increased investment in regenerative agriculture and other programs across our value chain aimed at reducing your carbon footprint.

Your goals. Our expertise.

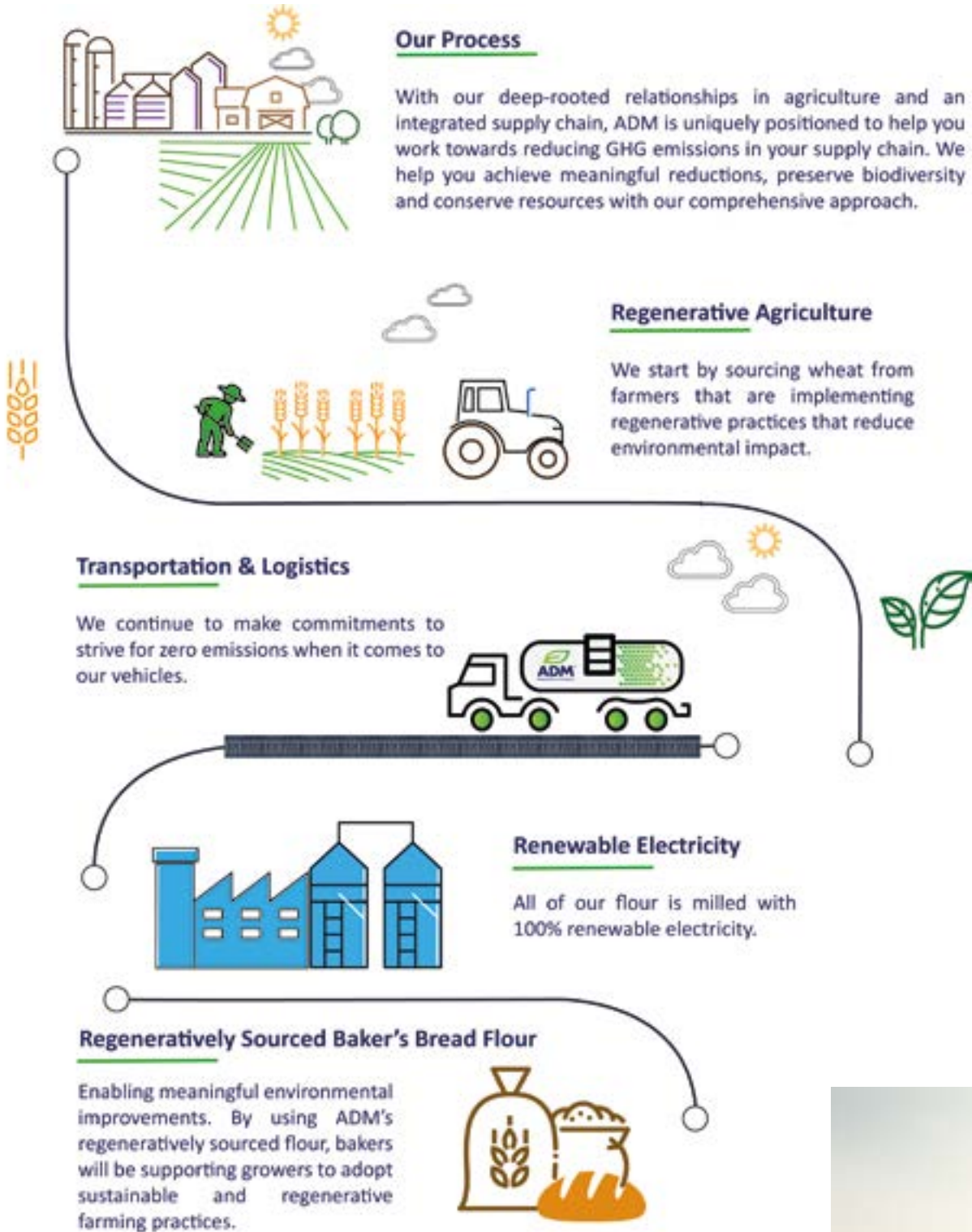
For over 20 years, ADM has been supporting sustainable and regenerative agriculture programs. Globally, we are working with growers in our supply chain to implement regenerative agriculture practices increasing our engagement annually with a goal to achieve 4 million acres by 2025.

Discover how ADM is paving the way with good business practices, progressive solutions and mindful actions that make a positive impact toward a brighter future for us all.

At ADM, we know that sustainable agriculture requires good stewardship of the natural systems and resources that farmers rely on for crop production.

The objective of our sustainable agriculture efforts is to help our supply chain meet society's commodity needs without compromising our future ability to produce.

Farm to Finished Product



Solutions that Drive Impact

ADM's programs have the potential to make an impact on Scope 3 emissions in your supply chain. Our integrated approach connects you to fields and growers, linking your finished products back to the farm for transparency and quality connections that matter to consumers.



Natures Gold Regeneratively Sourced Baker's Bread Flour



To help pave the way for the next generation of delicious, tailored bakery offerings that not only supports consumers' desire to support sustainable agriculture but also ensures that they are contributing to a healthier planet with each wholesome ingredient used, ADM has launched the NATURE'S GOLD Regeneratively Sourced Baker's Bread Flour, available in 16kg bags.

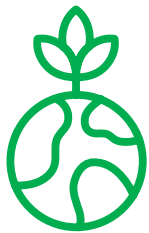
This flour is the perfect choice of flour for bakers looking to boast premium sustainably sourced bakes, such as; artisan style breads, rolls, pizza bases and flat breads (to name but a few applications), just simply swap out your usual white bread flour for ADM NATURE'S GOLD Regeneratively Sourced Baker's Bread Flour! By using ADM's regeneratively sourced flour, bakers will be supporting growers to adopt sustainable and regenerative farming practices.



ADM re:generations™:

Regenerative Farming Practices

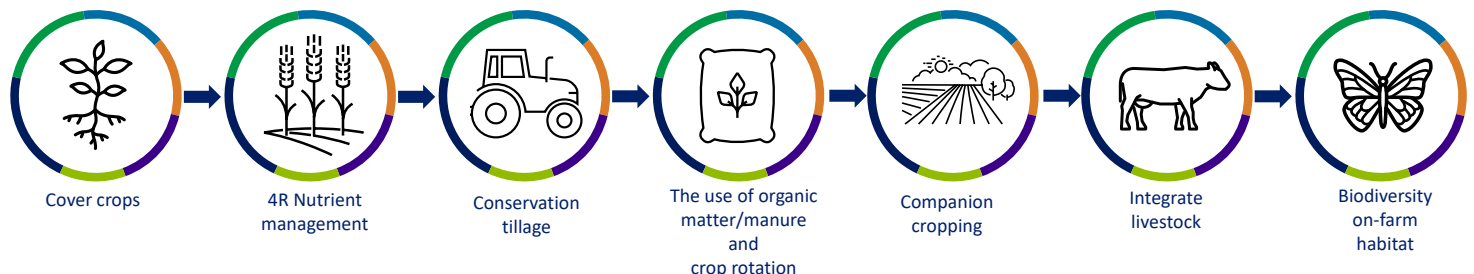
At ADM, we work together with growers to identify and implement regenerative farming practices that reduce GHG emissions, improve soil health, protect water quality, sequester carbon and increase farm resiliency.



PRINCIPLES

ADM adheres to principles of a regenerative agriculture system that are based in indigenous ways of land management and are adaptive to local physical conditions and culture.

- **Maintain living roots in soil**
Cover crops
- **Maximize diversity:**
Crops, soil, pollinators
Crop rotation Integrated pest management
- **Minimize soil disturbance**
Conservation tillage or no till
- **Continuously cover bare soil**
Cover crops
No till
- **Responsibly manage inputs**
Fertiliser & pesticides



RECRUITMENT & SUPPORT

In 2021 we launched our ADM Sustainable Wheat Project, bringing together a group of pioneering farmers in the UK to map their carbon footprints over a 3-year project and understand ways to reduce them.



DATA GATHERING & RESULT ANALYSIS

The findings are already helping steer ADM's support for farmers and has led to us expanding our regenerative agriculture and climate-smart agriculture programme.

We are helping create a more sustainable food system by providing financial and technical support to farmers who are taking positive steps to reduce their carbon emissions, improve water quality and promote soil health and biodiversity through the implementation of regenerative agriculture practices.

Processing & Refining

At ADM, we have a robust Environmental Management System (EMS) aligned with ISO to manage our operations and facilities. We minimise our impacts to the environment by following different foundational procedures and ensuring we meet our environmental obligations. Our Strive 35 environmental goals guide the tracking and implementation of programs globally across our operations.

This program consists of key elements such as:

- Reducing our energy usage in both our trucks and mills
- Investing alternative energy generation, such as the hydroelectric power plant. Over the last ten years, we've reduced energy needs by 25% and now all of our flour is milled with 100% renewable electricity.
- We are committed to reducing our carbon footprint
- All of our flour is packed into recyclable bags

ADM IS YOUR PARTNER IN SUSTAINABLE SOURCING FOR A BETTER TOMORROW



Climate

protecting the planet through our actions



Integrity

promoting human rights and social responsibility



People & Communities

supporting others at home and around the globe

Why Partner with ADM for Sustainable Solutions



CUSTOMISABLE

Flexible and diverse options tailored to your goals



TURNKEY

A range of solutions ready to launch today



COMMITTED

Long-term investments and experienced staff



VERIFIED

Farm to finished product

ARCHER DANIELS MIDLAND COMPANY DISCLAIMS ANY AND ALL WARRANTIES, WHETHER EXPRESS OR IMPLIED, AND SPECIFICALLY DISCLAIMS THE IMPLIED WARRANTIES OF MERCHANTABILITY, FITNESS FOR A PARTICULAR PURPOSE, AND NON-INFRINGEMENT. OUR RESPONSIBILITY FOR ANY CLAIM IS LIMITED TO THE PURCHASE PRICE OF MATERIAL PURCHASED FROM US. CUSTOMERS ARE RESPONSIBLE FOR OBTAINING ANY LICENSES OR OTHER RIGHTS THAT MAY BE NECESSARY TO MAKE, USE, OR SELL PRODUCTS CONTAINING OUR INGREDIENTS. ANY CLAIMS MADE BY CUSTOMERS REGARDING INGREDIENT TRAITS MUST BE BASED ON THE SCIENTIFIC STANDARD AND REGULATORY/LEGISLATIVE REQUIREMENTS OF THE COUNTRY IN WHICH THE FINAL PRODUCTS ARE OFFERED FOR SALE.